

Evolutia numarului de someri inregistrati in anul 2007 la nivel national si pe judete

| Nr. crt. | JUDETUL | IAN | FEB. | MARTIE | APRILIE | MAI | IUNIE | IULIE | AUGUST | SEPT. | OCT. | NOV. | DEC. | medie anuala |
|----------|---------------|---------------|---------------|---------------|---------------|---------------|---------------|---------------|---------------|---------------|---------------|---------------|---------------|---------------|
| 1 | ALBA | 13495 | 13654 | 12680 | 12037 | 10605 | 9805 | 9460 | 9128 | 9021 | 9108 | 9465 | 10509 | 10747 |
| 2 | ARAD | 7445 | 7478 | 6947 | 6284 | 5756 | 5555 | 5386 | 5430 | 5222 | 5131 | 5046 | 4929 | 5884 |
| 3 | ARGES | 17039 | 16984 | 16867 | 15832 | 14862 | 14266 | 13396 | 13503 | 13418 | 13592 | 13124 | 12985 | 14656 |
| 4 | BACAU | 14321 | 13308 | 12588 | 12508 | 11536 | 10775 | 10760 | 11612 | 11008 | 10796 | 10679 | 10355 | 11687 |
| 5 | BIHOR | 8303 | 7895 | 7698 | 6704 | 6151 | 5904 | 5509 | 5339 | 5015 | 6353 | 7720 | 6706 | 6608 |
| 6 | BISTRITA | 4994 | 4525 | 4307 | 3836 | 3555 | 3113 | 2865 | 2818 | 2654 | 3035 | 3007 | 3105 | 3485 |
| 7 | BOTOSANI | 9408 | 9081 | 8648 | 7991 | 7496 | 6189 | 5953 | 6189 | 6160 | 6431 | 6331 | 6391 | 7189 |
| 8 | BRASOV | 15322 | 14003 | 13271 | 13411 | 14469 | 13577 | 13185 | 12944 | 12649 | 13128 | 13497 | 12603 | 13505 |
| 9 | BRAILA | 8058 | 7738 | 7282 | 6673 | 5616 | 5518 | 5273 | 5176 | 5047 | 5017 | 5093 | 5315 | 5984 |
| 10 | BUCURESTI | 22621 | 22356 | 21622 | 21086 | 21017 | 21002 | 21055 | 21080 | 21065 | 20180 | 19167 | 18288 | 20878 |
| 11 | BUZAU | 15595 | 14507 | 14275 | 13270 | 12152 | 11359 | 10257 | 10188 | 10139 | 10444 | 10098 | 10604 | 11907 |
| 12 | CARAS SEVERIN | 9658 | 8789 | 8384 | 8059 | 7712 | 7509 | 7202 | 7328 | 7508 | 9147 | 9027 | 8967 | 8274 |
| 13 | CALARASI | 7784 | 7216 | 7057 | 6182 | 5278 | 5095 | 5048 | 5062 | 4851 | 4890 | 4912 | 4965 | 5695 |
| 14 | CLUJ | 11801 | 10949 | 10568 | 9824 | 9262 | 8892 | 8896 | 8482 | 8477 | 10009 | 10427 | 10203 | 9816 |
| 15 | CONSTANTA | 14159 | 13385 | 12574 | 10341 | 7580 | 6588 | 6163 | 5950 | 5877 | 8983 | 10863 | 10858 | 9443 |
| 16 | COVASNA | 6689 | 6541 | 6370 | 5708 | 5256 | 5050 | 4533 | 4669 | 4700 | 5624 | 6383 | 6653 | 5681 |
| 17 | DAMBOVITA | 12869 | 12664 | 12169 | 11503 | 10691 | 10309 | 9815 | 9755 | 9505 | 10871 | 11576 | 11366 | 11091 |
| 18 | DOLJ | 19484 | 19796 | 19115 | 17301 | 16207 | 15514 | 14355 | 13883 | 14290 | 14506 | 14250 | 14347 | 16087 |
| 19 | GALATI | 16069 | 15623 | 15246 | 14534 | 13725 | 13231 | 12876 | 12661 | 12332 | 12509 | 12414 | 12589 | 13651 |
| 20 | GIURGIU | 5100 | 5085 | 4849 | 4548 | 4531 | 4669 | 5253 | 5323 | 5095 | 4851 | 4204 | 4090 | 4800 |
| 21 | GORJ | 12456 | 11742 | 10709 | 9618 | 8865 | 8840 | 8494 | 8771 | 8990 | 8912 | 8532 | 8205 | 9511 |
| 22 | HARGHITA | 10300 | 10025 | 9377 | 8197 | 7280 | 7028 | 6214 | 6121 | 6005 | 7510 | 7430 | 7163 | 7721 |
| 23 | HUNEDOARA | 13632 | 12896 | 11570 | 10535 | 9813 | 9779 | 9651 | 10103 | 10142 | 11690 | 10492 | 10087 | 10866 |
| 24 | IALOMITA | 9937 | 8888 | 7445 | 6558 | 5865 | 5528 | 5276 | 5338 | 5312 | 5235 | 7326 | 7435 | 6679 |
| 25 | IASI | 20061 | 18709 | 17199 | 16913 | 16580 | 16613 | 17023 | 17232 | 17353 | 17197 | 17444 | 17695 | 17502 |
| 26 | ILFOV | 2615 | 2555 | 2569 | 2469 | 2355 | 2350 | 2293 | 2211 | 2226 | 2247 | 2153 | 2128 | 2348 |
| 27 | MARAMURES | 9554 | 10175 | 9736 | 9008 | 8340 | 8136 | 7669 | 7102 | 6724 | 7292 | 7371 | 7068 | 8181 |
| 28 | MEHEDINTI | 13011 | 12990 | 12510 | 11644 | 11161 | 10675 | 10301 | 10394 | 10370 | 10522 | 10088 | 9959 | 11135 |
| 29 | MURES | 13781 | 12894 | 12175 | 11206 | 9618 | 9148 | 8739 | 9020 | 8119 | 9727 | 10863 | 10691 | 10498 |
| 30 | NEAMT | 10578 | 10544 | 9977 | 8953 | 7930 | 7770 | 7895 | 8212 | 8139 | 8262 | 8184 | 7800 | 8687 |
| 31 | OLT | 12033 | 11678 | 10420 | 9431 | 8245 | 8128 | 8159 | 8180 | 8266 | 8642 | 8553 | 8673 | 9201 |
| 32 | PRAHOVA | 15973 | 14633 | 13843 | 12580 | 11713 | 11250 | 10997 | 10779 | 10290 | 12148 | 12401 | 12124 | 12394 |
| 33 | SATU-MARE | 5847 | 6216 | 5897 | 5356 | 4665 | 4417 | 4128 | 4010 | 3726 | 3911 | 4015 | 4080 | 4689 |
| 34 | SALAJ | 6532 | 6133 | 5746 | 5186 | 4562 | 4434 | 4212 | 4400 | 4374 | 4497 | 4568 | 4739 | 4949 |
| 35 | SIBIU | 9513 | 8568 | 7749 | 7511 | 6763 | 6372 | 5587 | 5245 | 5540 | 5849 | 5963 | 5806 | 6706 |
| 36 | SUCEAVA | 12071 | 12054 | 11297 | 9744 | 8694 | 8761 | 8656 | 9832 | 9075 | 9596 | 9826 | 9457 | 9922 |
| 37 | TELEORMAN | 14949 | 14448 | 13837 | 12665 | 11605 | 10998 | 10654 | 11608 | 11602 | 11988 | 12795 | 12552 | 12475 |
| 38 | TIMIS | 6757 | 6494 | 5885 | 5427 | 5244 | 4953 | 5190 | 4990 | 4998 | 5568 | 5443 | 5487 | 5536 |
| 39 | TULCEA | 4883 | 4781 | 4602 | 4440 | 4096 | 3837 | 3530 | 3341 | 2921 | 3206 | 3347 | 3461 | 3870 |
| 40 | VASLUI | 16917 | 16487 | 14409 | 12524 | 11263 | 10407 | 10018 | 15420 | 15594 | 15762 | 15431 | 15619 | 14154 |
| 41 | VALCEA | 9293 | 8302 | 7365 | 6680 | 6094 | 5828 | 5788 | 6104 | 6009 | 6932 | 6421 | 6123 | 6745 |
| 42 | VRANCEA | 6402 | 6224 | 6189 | 6062 | 5624 | 5542 | 5449 | 5487 | 5204 | 6077 | 6040 | 5658 | 5830 |
| | TOTAL | 477309 | 459013 | 433023 | 400339 | 369832 | 354714 | 343163 | 350420 | 345012 | 367375 | 371969 | 367838 | 386667 |

Evolutia numarului de someri neindemnizati in anul 2007 la nivel national si pe judete

| Nr. crt. | JUDETUL | IAN | FEB. | MARTIE | APRILIE | MAI | IUNIE | IULIE | AUGUST | SEPT. | OCT. | NOV. | DEC. | medie anuala |
|----------|---------------|---------------|---------------|---------------|---------------|---------------|---------------|---------------|---------------|---------------|---------------|---------------|---------------|---------------|
| 1 | ALBA | 5668 | 5110 | 5123 | 5259 | 5018 | 5001 | 4778 | 4926 | 4843 | 4665 | 4755 | 4618 | 4980 |
| 2 | ARAD | 4539 | 4370 | 4052 | 3742 | 3395 | 3330 | 3195 | 3221 | 2965 | 2925 | 2815 | 2540 | 3424 |
| 3 | ARGES | 9022 | 9153 | 9372 | 8797 | 8368 | 8002 | 7938 | 8096 | 8288 | 8563 | 8130 | 7825 | 8463 |
| 4 | BACAU | 7825 | 7595 | 7264 | 7533 | 7190 | 6788 | 6902 | 7968 | 6991 | 6695 | 6480 | 5930 | 7097 |
| 5 | BIHOR | 5350 | 5093 | 4774 | 4185 | 3847 | 3743 | 3372 | 3348 | 3183 | 4362 | 5767 | 4759 | 4315 |
| 6 | BISTRITA | 2469 | 2023 | 2068 | 1884 | 1811 | 1494 | 1243 | 1205 | 1077 | 1290 | 1222 | 1278 | 1589 |
| 7 | BOTOSANI | 7183 | 7198 | 7092 | 6622 | 6349 | 5125 | 4893 | 5140 | 5021 | 5174 | 5071 | 5017 | 5824 |
| 8 | BRASOV | 9175 | 8494 | 8123 | 8693 | 6614 | 6016 | 5792 | 5743 | 5395 | 6872 | 6983 | 6537 | 7036 |
| 9 | BRAILA | 5525 | 5432 | 5336 | 5079 | 4391 | 4335 | 4124 | 4083 | 4002 | 4092 | 4098 | 4019 | 4543 |
| 10 | BUCURESTI | 15851 | 15768 | 15281 | 14970 | 16083 | 16320 | 16387 | 16318 | 16516 | 15655 | 14893 | 14019 | 15672 |
| 11 | BUZAU | 11328 | 10609 | 10796 | 10284 | 9494 | 8828 | 8213 | 8252 | 8260 | 8273 | 7872 | 8149 | 9197 |
| 12 | CARAS SEVERIN | 6474 | 4319 | 4217 | 4359 | 3941 | 3934 | 3608 | 3703 | 3821 | 5396 | 5239 | 5268 | 4523 |
| 13 | CALARASI | 5942 | 5387 | 5288 | 4875 | 4419 | 4225 | 4180 | 4178 | 4141 | 4118 | 4101 | 3890 | 4562 |
| 14 | CLUJ | 6635 | 5947 | 5911 | 5402 | 5072 | 4986 | 5045 | 5038 | 5118 | 6813 | 6964 | 6746 | 5806 |
| 15 | CONSTANTA | 7223 | 6149 | 5700 | 5261 | 3976 | 3717 | 3487 | 3457 | 3130 | 5454 | 5942 | 5246 | 4895 |
| 16 | COVASNA | 4476 | 4467 | 4430 | 3815 | 3508 | 3340 | 2835 | 3024 | 3057 | 3869 | 4765 | 4742 | 3861 |
| 17 | DAMBOVITA | 9009 | 9249 | 9336 | 9021 | 8438 | 8155 | 7840 | 7861 | 7508 | 8752 | 9223 | 9106 | 8625 |
| 18 | DOLJ | 12803 | 13266 | 13649 | 12669 | 12078 | 11633 | 10696 | 10608 | 10840 | 10772 | 10209 | 9940 | 11597 |
| 19 | GALATI | 12450 | 12196 | 12347 | 11984 | 11411 | 11229 | 10964 | 10782 | 10252 | 10182 | 10124 | 10323 | 11187 |
| 20 | GIURGIU | 3466 | 3495 | 3325 | 3159 | 3272 | 3532 | 3955 | 4065 | 3786 | 3695 | 3033 | 2900 | 3474 |
| 21 | GORJ | 7243 | 6384 | 6473 | 5720 | 5478 | 5349 | 5172 | 5382 | 5194 | 4856 | 4519 | 4291 | 5505 |
| 22 | HARGHITA | 5589 | 5342 | 5104 | 4474 | 3989 | 3765 | 3474 | 3472 | 3429 | 4712 | 4476 | 3967 | 4316 |
| 23 | HUNEDOARA | 5635 | 5326 | 5218 | 5025 | 4916 | 5218 | 5260 | 5770 | 5831 | 7484 | 6311 | 5611 | 5634 |
| 24 | IALOMITA | 6023 | 5305 | 4980 | 4442 | 3939 | 3688 | 3593 | 3806 | 3627 | 3629 | 5568 | 5392 | 4499 |
| 25 | IASI | 15765 | 14743 | 13888 | 13949 | 13875 | 13780 | 14240 | 14513 | 14319 | 13984 | 14159 | 14350 | 14297 |
| 26 | ILFOV | 1538 | 1524 | 1560 | 1545 | 1508 | 1525 | 1511 | 1477 | 1499 | 1519 | 1554 | 1537 | 1525 |
| 27 | MARAMURES | 6102 | 5869 | 5314 | 5103 | 4801 | 4716 | 4418 | 3833 | 3544 | 4054 | 4236 | 3921 | 4659 |
| 28 | MEHEDINTI | 10736 | 10862 | 10761 | 10034 | 9716 | 9285 | 8834 | 9022 | 8950 | 8818 | 8376 | 8115 | 9459 |
| 29 | MURES | 9505 | 8882 | 8578 | 7719 | 6588 | 6179 | 5778 | 6046 | 5186 | 6802 | 7895 | 7596 | 7230 |
| 30 | NEAMT | 6995 | 7200 | 6976 | 6316 | 5651 | 5756 | 5997 | 6378 | 6069 | 6084 | 5980 | 5480 | 6240 |
| 31 | OLT | 8500 | 8526 | 7782 | 7172 | 6481 | 6526 | 6692 | 6769 | 6753 | 6687 | 6590 | 6229 | 7059 |
| 32 | PRAHOVA | 7275 | 6583 | 6259 | 5742 | 5422 | 5187 | 5103 | 5058 | 4907 | 6487 | 6719 | 6502 | 5937 |
| 33 | SATU-MARE | 3662 | 3733 | 3624 | 3425 | 3216 | 3177 | 3036 | 2843 | 2739 | 2833 | 2934 | 2809 | 3169 |
| 34 | SALAJ | 4258 | 3979 | 3713 | 3428 | 3034 | 2871 | 2669 | 2847 | 2803 | 2907 | 2983 | 2985 | 3206 |
| 35 | SIBIU | 5842 | 5404 | 5040 | 5148 | 4167 | 3922 | 3243 | 2937 | 3037 | 3358 | 3496 | 3370 | 4080 |
| 36 | SUCEAVA | 6477 | 6522 | 6295 | 5747 | 5320 | 5459 | 5521 | 6839 | 5911 | 6077 | 6108 | 5699 | 5998 |
| 37 | TELEORMAN | 11249 | 11179 | 10923 | 9909 | 9229 | 8765 | 8409 | 9656 | 9784 | 9823 | 10440 | 10199 | 9964 |
| 38 | TIMIS | 3808 | 3729 | 3527 | 3310 | 3317 | 3049 | 3297 | 3183 | 3236 | 3620 | 3516 | 3395 | 3416 |
| 39 | TULCEA | 2521 | 2507 | 2652 | 2473 | 2254 | 2329 | 2133 | 2036 | 1794 | 2067 | 2149 | 2060 | 2248 |
| 40 | VASLUI | 11509 | 11111 | 9916 | 8473 | 7755 | 7270 | 7035 | 12653 | 12451 | 12518 | 12086 | 11953 | 10394 |
| 41 | VALCEA | 4884 | 4164 | 3949 | 3819 | 3616 | 3627 | 3645 | 4071 | 3924 | 4460 | 3786 | 3476 | 3952 |
| 42 | VRANCEA | 5007 | 4792 | 4787 | 4810 | 4509 | 4483 | 4405 | 4452 | 4088 | 4998 | 4925 | 4539 | 4650 |
| | TOTAL | 302536 | 288986 | 280803 | 265376 | 247456 | 239659 | 232912 | 244059 | 237269 | 255394 | 256492 | 246328 | 258106 |

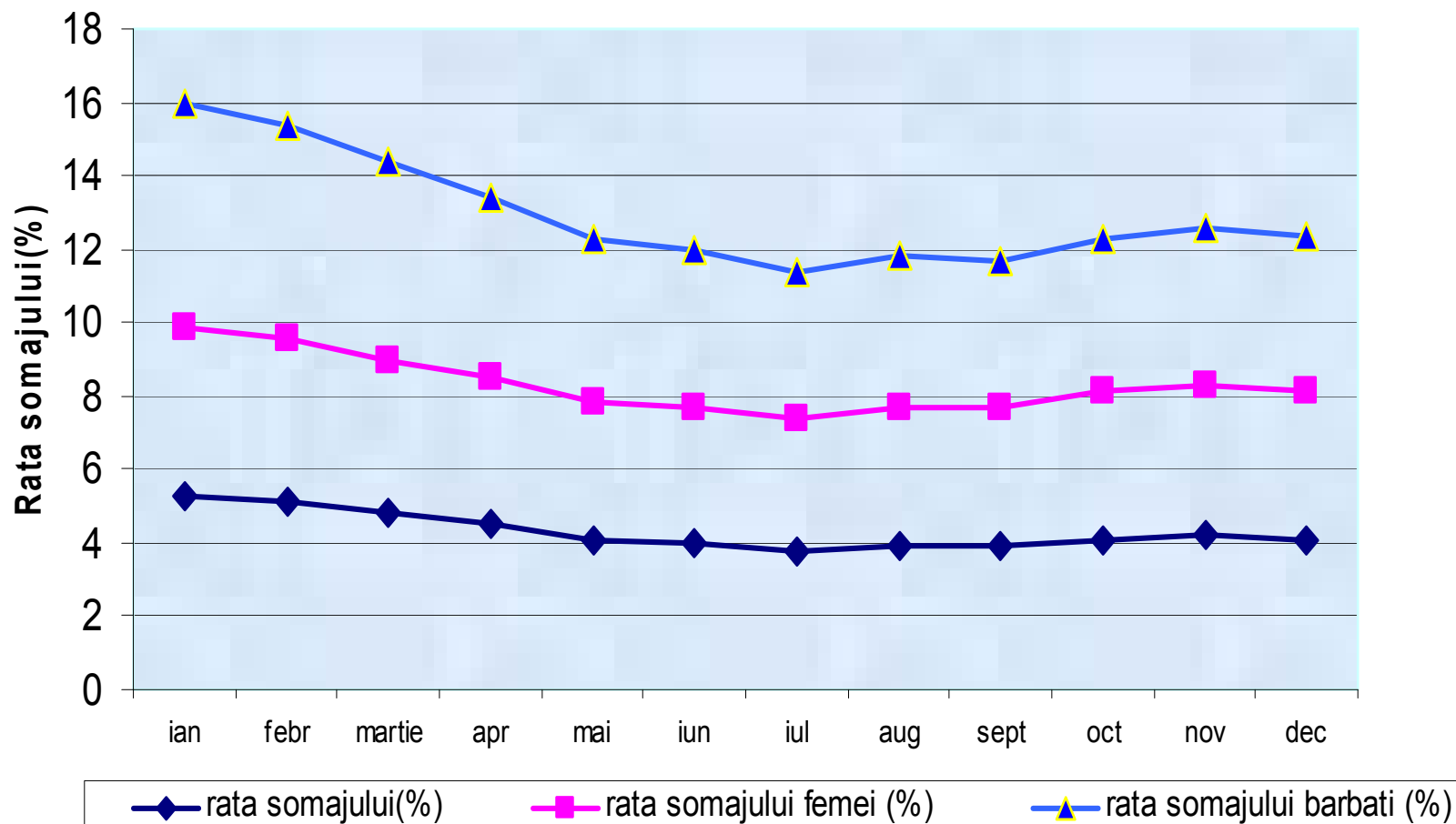
Evolutia numarului de someri indemnizati in anul 2007 la nivel national si pe judete

| Nr. crt. | JUDETUL | IAN | FEB. | MARTIE | APRILIE | MAI | IUNIE | IULIE | AUGUST | SEPT. | OCT. | NOV. | DEC. | medie anuala |
|----------|---------------|---------------|---------------|---------------|---------------|---------------|---------------|---------------|---------------|---------------|---------------|---------------|---------------|---------------|
| 1 | ALBA | 7827 | 8544 | 7557 | 6778 | 5587 | 4804 | 4682 | 4202 | 4178 | 4443 | 4710 | 5891 | 5767 |
| 2 | ARAD | 2906 | 3108 | 2895 | 2542 | 2361 | 2225 | 2191 | 2209 | 2257 | 2206 | 2231 | 2389 | 2460 |
| 3 | ARGES | 8017 | 7831 | 7495 | 7035 | 6494 | 6264 | 5458 | 5407 | 5130 | 5029 | 4994 | 5160 | 6193 |
| 4 | BACAU | 6496 | 5713 | 5324 | 4975 | 4346 | 3987 | 3858 | 3644 | 4017 | 4101 | 4199 | 4425 | 4590 |
| 5 | BIHOR | 2953 | 2802 | 2924 | 2519 | 2304 | 2161 | 2137 | 1991 | 1832 | 1991 | 1953 | 1947 | 2293 |
| 6 | BISTRITA | 2525 | 2502 | 2239 | 1952 | 1744 | 1619 | 1622 | 1613 | 1577 | 1745 | 1785 | 1827 | 1896 |
| 7 | BOTOSANI | 2225 | 1883 | 1556 | 1369 | 1147 | 1064 | 1060 | 1049 | 1139 | 1257 | 1260 | 1374 | 1365 |
| 8 | BRASOV | 6147 | 5509 | 5148 | 4718 | 7855 | 7561 | 7393 | 7201 | 7254 | 6256 | 6514 | 6066 | 6469 |
| 9 | BRAILA | 2533 | 2306 | 1946 | 1594 | 1225 | 1183 | 1149 | 1093 | 1045 | 925 | 995 | 1296 | 1441 |
| 10 | BUCURESTI | 6770 | 6588 | 6341 | 6116 | 4934 | 4682 | 4668 | 4762 | 4549 | 4525 | 4274 | 4269 | 5207 |
| 11 | BUZAU | 4267 | 3898 | 3479 | 2986 | 2658 | 2531 | 2044 | 1936 | 1879 | 2171 | 2226 | 2455 | 2711 |
| 12 | CARAS SEVERIN | 3184 | 4470 | 4167 | 3700 | 3771 | 3575 | 3594 | 3625 | 3687 | 3751 | 3788 | 3699 | 3751 |
| 13 | CALARASI | 1842 | 1829 | 1769 | 1307 | 859 | 870 | 868 | 884 | 710 | 772 | 811 | 1075 | 1133 |
| 14 | CLUJ | 5166 | 5002 | 4657 | 4422 | 4190 | 3906 | 3851 | 3444 | 3359 | 3196 | 3463 | 3457 | 4009 |
| 15 | CONSTANTA | 6936 | 7236 | 6874 | 5080 | 3604 | 2871 | 2676 | 2493 | 2747 | 3529 | 4921 | 5612 | 4548 |
| 16 | COVASNA | 2213 | 2074 | 1940 | 1893 | 1748 | 1710 | 1698 | 1645 | 1643 | 1755 | 1618 | 1911 | 1821 |
| 17 | DAMBOVITA | 3860 | 3415 | 2833 | 2482 | 2253 | 2154 | 1975 | 1894 | 1997 | 2119 | 2353 | 2260 | 2466 |
| 18 | DOLJ | 6681 | 6530 | 5466 | 4632 | 4129 | 3881 | 3659 | 3275 | 3450 | 3734 | 4041 | 4407 | 4490 |
| 19 | GALATI | 3619 | 3427 | 2899 | 2550 | 2314 | 2002 | 1912 | 1879 | 2080 | 2327 | 2290 | 2266 | 2464 |
| 20 | GIURGIU | 1634 | 1590 | 1524 | 1389 | 1259 | 1137 | 1298 | 1258 | 1309 | 1156 | 1171 | 1190 | 1326 |
| 21 | GORJ | 5213 | 5358 | 4236 | 3898 | 3387 | 3491 | 3322 | 3389 | 3796 | 4056 | 4013 | 3914 | 4006 |
| 22 | HARGHITA | 4711 | 4683 | 4273 | 3723 | 3291 | 3263 | 2740 | 2649 | 2576 | 2798 | 2954 | 3196 | 3405 |
| 23 | HUNEDOARA | 7997 | 7570 | 6352 | 5510 | 4897 | 4561 | 4391 | 4333 | 4311 | 4206 | 4181 | 4476 | 5232 |
| 24 | IALOMITA | 3914 | 3583 | 2465 | 2116 | 1926 | 1840 | 1683 | 1532 | 1685 | 1606 | 1758 | 2043 | 2179 |
| 25 | IASI | 4296 | 3966 | 3311 | 2964 | 2705 | 2833 | 2783 | 2719 | 3034 | 3213 | 3285 | 3345 | 3205 |
| 26 | ILFOV | 1077 | 1031 | 1009 | 924 | 847 | 825 | 782 | 734 | 727 | 728 | 599 | 591 | 823 |
| 27 | MARAMURES | 3452 | 4306 | 4422 | 3905 | 3539 | 3420 | 3251 | 3269 | 3180 | 3238 | 3135 | 3147 | 3522 |
| 28 | MEHEDINTI | 2275 | 2128 | 1749 | 1610 | 1445 | 1390 | 1467 | 1372 | 1420 | 1704 | 1712 | 1844 | 1676 |
| 29 | MURES | 4276 | 4012 | 3597 | 3487 | 3030 | 2969 | 2961 | 2974 | 2933 | 2925 | 2968 | 3095 | 3269 |
| 30 | NEAMT | 3583 | 3344 | 3001 | 2637 | 2279 | 2014 | 1898 | 1834 | 2070 | 2178 | 2204 | 2320 | 2447 |
| 31 | OLT | 3533 | 3152 | 2638 | 2259 | 1764 | 1602 | 1467 | 1411 | 1513 | 1955 | 1963 | 2444 | 2142 |
| 32 | PRAHOVA | 8698 | 8050 | 7584 | 6838 | 6291 | 6063 | 5894 | 5721 | 5383 | 5661 | 5682 | 5622 | 6457 |
| 33 | SATU-MARE | 2185 | 2483 | 2273 | 1931 | 1449 | 1240 | 1092 | 1167 | 987 | 1078 | 1081 | 1271 | 1520 |
| 34 | SALAJ | 2274 | 2154 | 2033 | 1758 | 1528 | 1563 | 1543 | 1553 | 1571 | 1590 | 1585 | 1754 | 1742 |
| 35 | SIBIU | 3671 | 3164 | 2709 | 2363 | 2596 | 2450 | 2344 | 2308 | 2503 | 2491 | 2467 | 2436 | 2625 |
| 36 | SUCEAVA | 5594 | 5532 | 5002 | 3997 | 3374 | 3302 | 3135 | 2993 | 3164 | 3519 | 3718 | 3758 | 3924 |
| 37 | TELEORMAN | 3700 | 3269 | 2914 | 2756 | 2376 | 2233 | 2245 | 1952 | 1818 | 2165 | 2355 | 2353 | 2511 |
| 38 | TIMIS | 2949 | 2765 | 2358 | 2117 | 1927 | 1904 | 1893 | 1807 | 1762 | 1948 | 1927 | 2092 | 2121 |
| 39 | TULCEA | 2362 | 2274 | 1950 | 1967 | 1842 | 1508 | 1397 | 1305 | 1127 | 1139 | 1198 | 1401 | 1623 |
| 40 | VASLUI | 5408 | 5376 | 4493 | 4051 | 3508 | 3137 | 2983 | 2767 | 3143 | 3244 | 3345 | 3666 | 3760 |
| 41 | VALCEA | 4409 | 4138 | 3416 | 2861 | 2478 | 2201 | 2143 | 2033 | 2085 | 2472 | 2635 | 2647 | 2793 |
| 42 | VRANCEA | 1395 | 1432 | 1402 | 1252 | 1115 | 1059 | 1044 | 1035 | 1116 | 1079 | 1115 | 1119 | 1180 |
| | TOTAL | 174773 | 170027 | 152220 | 134963 | 122376 | 115055 | 110251 | 106361 | 107743 | 111981 | 115477 | 121510 | 128561 |

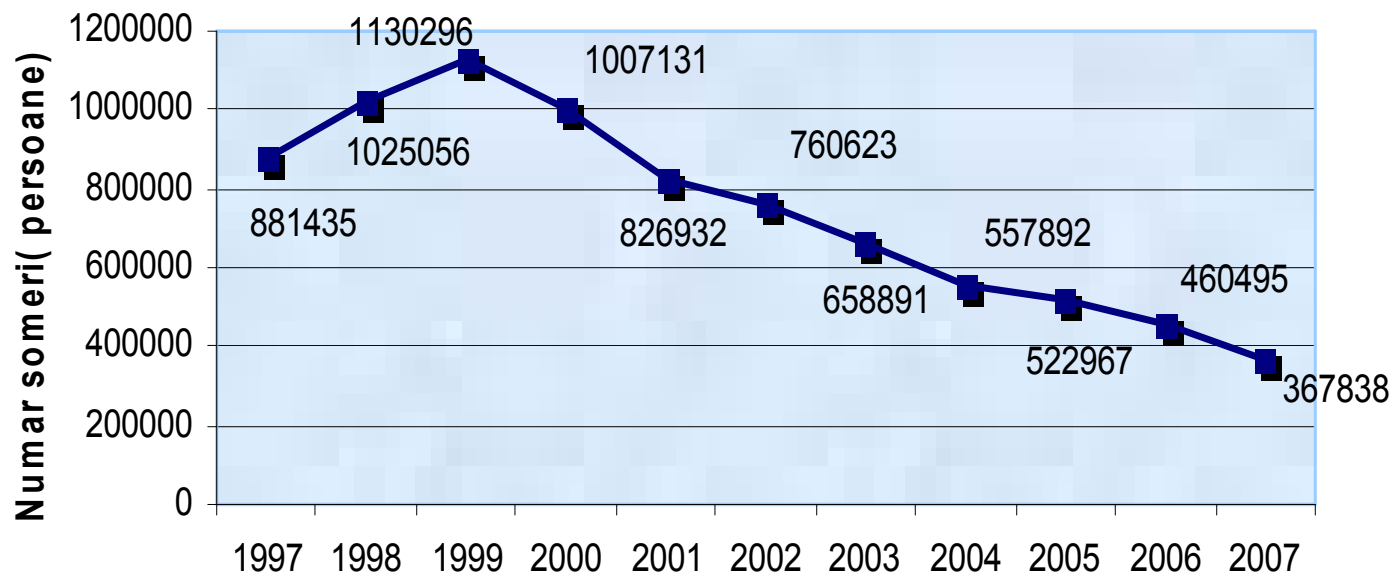
Evoluția ratelor șomajului înregistrat pe județe și pe țară în anul 2007

| Nr. crt. | JUDETUL | IAN | FEB. | MARTIE | APRILIE | MAI | IUNIE | IULIE | AUGUST | SEPT. | OCT. | NOV. | DEC. | medie anuala |
|----------|-------------------|------------|------------|------------|------------|------------|------------|------------|------------|------------|------------|------------|------------|--------------|
| 1 | ALBA | 7.3 | 7.4 | 6.9 | 6.5 | 5.8 | 5.3 | 5.1 | 5.0 | 4.9 | 5.0 | 5.1 | 5.7 | 5.8 |
| 2 | ARAD | 3.5 | 3.5 | 3.3 | 3.0 | 2.7 | 2.6 | 2.6 | 2.6 | 2.5 | 2.4 | 2.4 | 2.3 | 2.8 |
| 3 | ARGES | 6.4 | 6.4 | 6.4 | 6.0 | 5.6 | 5.4 | 5.0 | 5.1 | 5.1 | 5.1 | 4.9 | 4.9 | 5.5 |
| 4 | BACAU | 6.0 | 5.6 | 5.3 | 5.3 | 4.8 | 4.5 | 4.5 | 4.8 | 4.6 | 4.5 | 4.5 | 4.4 | 4.9 |
| 5 | BIHOR | 3.0 | 2.8 | 2.7 | 2.4 | 2.2 | 2.1 | 2.0 | 1.9 | 1.8 | 2.3 | 2.7 | 2.4 | 2.4 |
| 6 | BISTRITA | 4.0 | 3.6 | 3.4 | 3.0 | 2.8 | 2.5 | 2.3 | 2.2 | 2.1 | 2.4 | 2.4 | 2.5 | 2.8 |
| 7 | BOTOSANI | 5.9 | 5.7 | 5.4 | 5.0 | 4.7 | 3.9 | 3.6 | 3.8 | 3.9 | 4.0 | 4.0 | 4.0 | 4.5 |
| 8 | BRASOV | 6.2 | 5.7 | 5.4 | 5.5 | 5.9 | 5.5 | 5.3 | 5.2 | 5.1 | 5.3 | 5.5 | 5.1 | 5.5 |
| 9 | BRAILA | 6.0 | 5.7 | 5.4 | 4.9 | 4.2 | 4.1 | 3.9 | 3.8 | 3.7 | 3.7 | 3.8 | 3.9 | 4.4 |
| 10 | BUCURESTI | 2.2 | 2.2 | 2.1 | 2.1 | 2.1 | 2.1 | 2.2 | 2.2 | 2.1 | 2.0 | 1.9 | 1.8 | 2.1 |
| 11 | BUZAU | 8.0 | 7.5 | 7.3 | 6.8 | 6.2 | 5.8 | 5.3 | 5.2 | 5.2 | 5.4 | 5.2 | 5.5 | 6.1 |
| 12 | CARAS SEVERIN | 7.7 | 7.0 | 6.6 | 6.4 | 6.1 | 6.0 | 5.5 | 5.6 | 5.9 | 7.2 | 7.2 | 7.1 | 6.5 |
| 13 | CALARASI | 7.2 | 6.6 | 6.5 | 5.7 | 4.9 | 4.7 | 4.5 | 4.5 | 4.5 | 4.5 | 4.5 | 4.6 | 5.2 |
| 14 | CLUJ | 3.6 | 3.4 | 3.2 | 3.0 | 2.8 | 2.7 | 2.7 | 2.6 | 2.6 | 3.1 | 3.2 | 3.1 | 3.0 |
| 15 | CONSTANTA | 4.6 | 4.3 | 4.1 | 3.4 | 2.5 | 2.1 | 2.0 | 2.0 | 1.9 | 2.9 | 3.5 | 3.5 | 3.1 |
| 16 | COVASNA | 7.3 | 7.1 | 6.9 | 6.2 | 5.7 | 5.5 | 4.8 | 5.0 | 5.1 | 6.1 | 7.0 | 7.2 | 6.2 |
| 17 | DAMBOVITA | 6.1 | 6.0 | 5.8 | 5.4 | 5.1 | 4.9 | 4.6 | 4.5 | 4.5 | 5.1 | 5.5 | 5.4 | 5.2 |
| 18 | DOLJ | 6.8 | 6.9 | 6.6 | 6.0 | 5.6 | 5.4 | 5.0 | 4.9 | 5.0 | 5.0 | 4.9 | 5.0 | 5.6 |
| 19 | GALATI | 7.3 | 7.1 | 7.0 | 6.6 | 6.3 | 6.0 | 5.8 | 5.7 | 5.6 | 5.7 | 5.7 | 5.8 | 6.2 |
| 20 | GIURGIU | 5.6 | 5.6 | 5.3 | 5.0 | 5.0 | 5.1 | 5.6 | 5.7 | 5.6 | 5.3 | 4.6 | 4.5 | 5.2 |
| 21 | GORJ | 8.3 | 7.8 | 7.2 | 6.4 | 5.9 | 5.9 | 5.6 | 5.7 | 6.0 | 6.0 | 5.7 | 5.7 | 6.4 |
| 22 | HARGHITA | 7.4 | 7.2 | 6.7 | 5.9 | 5.2 | 5.0 | 4.5 | 4.4 | 4.3 | 5.4 | 5.3 | 5.1 | 5.5 |
| 23 | HUNEDOARA | 6.6 | 6.3 | 5.6 | 5.1 | 4.8 | 4.8 | 4.5 | 4.7 | 4.9 | 5.7 | 5.1 | 4.9 | 5.3 |
| 24 | IALOMITA | 9.3 | 8.3 | 6.9 | 6.1 | 5.5 | 5.2 | 4.8 | 4.9 | 5.0 | 4.9 | 6.8 | 6.9 | 6.2 |
| 25 | IASI | 6.4 | 6.0 | 5.5 | 5.4 | 5.3 | 5.3 | 5.3 | 5.4 | 5.6 | 5.5 | 5.6 | 5.7 | 5.6 |
| 26 | ILFOV | 1.8 | 1.8 | 1.8 | 1.7 | 1.7 | 1.7 | 1.7 | 1.7 | 1.6 | 1.6 | 1.5 | 1.5 | 1.7 |
| 27 | MARAMURES | 4.6 | 4.9 | 4.7 | 4.4 | 4.1 | 4.0 | 3.7 | 3.4 | 3.3 | 3.5 | 3.6 | 3.4 | 4.0 |
| 28 | MEHEDINTI | 10.6 | 10.6 | 10.2 | 9.5 | 9.1 | 8.7 | 8.3 | 8.4 | 8.4 | 8.6 | 8.2 | 8.1 | 9.1 |
| 29 | MURES | 5.5 | 5.2 | 4.9 | 4.5 | 3.9 | 3.7 | 3.5 | 3.6 | 3.3 | 3.9 | 4.4 | 4.3 | 4.2 |
| 30 | NEAMT | 5.1 | 5.1 | 4.8 | 4.3 | 3.8 | 3.8 | 3.7 | 3.9 | 3.9 | 4.0 | 4.0 | 3.8 | 4.2 |
| 31 | OLT | 6.6 | 6.4 | 5.7 | 5.2 | 4.5 | 4.5 | 4.4 | 4.4 | 4.6 | 4.8 | 4.7 | 4.8 | 5.1 |
| 32 | PRAHOVA | 5.2 | 4.7 | 4.5 | 4.1 | 3.8 | 3.6 | 3.5 | 3.5 | 3.3 | 3.9 | 4.0 | 3.9 | 4.0 |
| 33 | SATU-MARE | 3.8 | 4.1 | 3.9 | 3.5 | 3.0 | 2.9 | 2.7 | 2.7 | 2.4 | 2.6 | 2.6 | 2.7 | 3.1 |
| 34 | SALAJ | 6.2 | 5.8 | 5.4 | 4.9 | 4.3 | 4.2 | 4.1 | 4.3 | 4.1 | 4.2 | 4.3 | 4.5 | 4.7 |
| 35 | SIBIU | 5.2 | 4.7 | 4.3 | 4.1 | 3.7 | 3.5 | 3.2 | 3.0 | 3.1 | 3.2 | 3.3 | 3.2 | 3.7 |
| 36 | SUCEAVA | 4.8 | 4.8 | 4.5 | 3.9 | 3.5 | 3.5 | 3.3 | 3.8 | 3.6 | 3.8 | 3.9 | 3.8 | 3.9 |
| 37 | TELEORMAN | 8.7 | 8.4 | 8.0 | 7.4 | 6.7 | 6.4 | 6.1 | 6.6 | 6.7 | 7.0 | 7.4 | 7.3 | 7.2 |
| 38 | TIMIS | 2.0 | 2.0 | 1.8 | 1.6 | 1.6 | 1.5 | 1.6 | 1.5 | 1.5 | 1.7 | 1.6 | 1.7 | 1.7 |
| 39 | TULCEA | 5.3 | 5.2 | 5.0 | 4.8 | 4.4 | 4.2 | 3.8 | 3.6 | 3.2 | 3.5 | 3.6 | 3.8 | 4.2 |
| 40 | VASLUI | 10.4 | 10.2 | 8.9 | 7.7 | 6.9 | 6.4 | 6.1 | 9.4 | 9.6 | 9.7 | 9.5 | 9.6 | 8.7 |
| 41 | VALCEA | 5.3 | 4.7 | 4.2 | 3.8 | 3.5 | 3.3 | 3.2 | 3.4 | 3.4 | 4.0 | 3.7 | 3.5 | 3.8 |
| 42 | VRANCEA | 4.3 | 4.2 | 4.2 | 4.1 | 3.8 | 3.7 | 3.7 | 3.7 | 3.5 | 4.1 | 4.1 | 3.8 | 3.9 |
| | TOTAL TARA | 5.3 | 5.1 | 4.8 | 4.5 | 4.1 | 4.0 | 3.8 | 3.9 | 3.9 | 4.1 | 4.2 | 4.1 | 4.3 |

Evolutia ratelor somajului masculin si feminin, comparativ cu rata somajului inregistrat la nivel national, in cursul anului 2007



Evolutia numarului de someri inregistrati la sfirsit de luna decembrie in perioada ultimului deceniu



nr someri

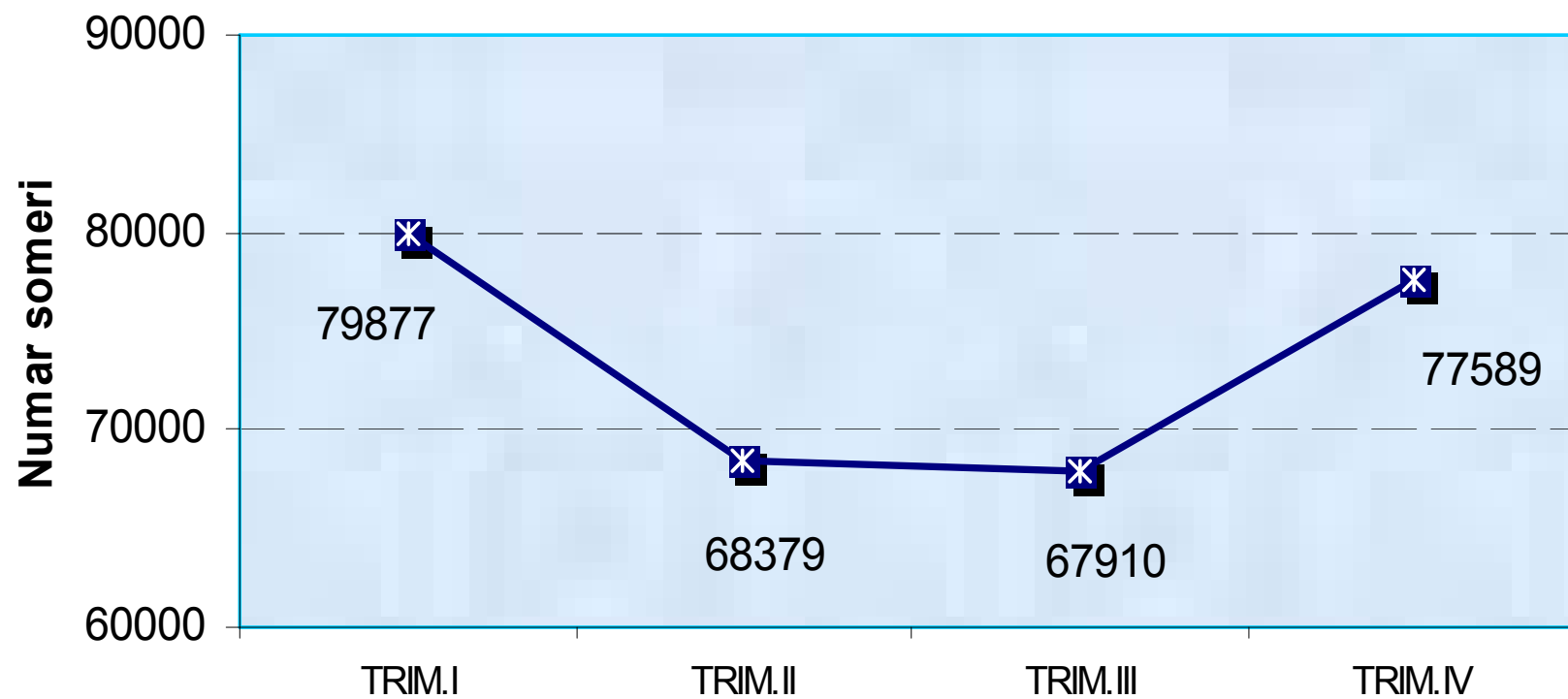
Intrarile de somei in evidentele agentilor pentru ocuparea fortei de munca -structurate pe motive-cumulat 12 luni 2007

| Nr.crt. | Judetul | Total | Disponibilizari colective | Disponibilizari curente de personal | Reactivari de drepturi banesti ale somerilor indemnizati | Reinnoiri de cereri de loc de munca ale somerilor neindemnizati | Absolventi | Persoane revenite din armata dupa satisfacerea stagiului militar | Persoane provenite din activitati individuale | Persoane intrate la categ.someri neindemnizati pt. solicitarea adeverintei cf. Lg.416/2001 privind venitul minim | Alte situatii |
|---------|-----------------------|----------------|---------------------------|-------------------------------------|--|---|--------------|--|---|--|---------------|
| 0 | 1 | 2 | 3 | 4 | 5 | 6 | 7 | 8 | 9 | 10 | 11 |
| 1 | ALBA | 20312 | 1533 | 4778 | 1638 | 8941 | 742 | 0 | 0 | 2273 | 407 |
| | din care femei | 9141 | 533 | 2408 | 767 | 3852 | 393 | 0 | 0 | 1019 | 169 |
| 2 | ARAD | 18815 | 353 | 3227 | 325 | 8250 | 873 | 0 | 0 | 3722 | 2065 |
| | din care femei | 8372 | 225 | 1591 | 156 | 3327 | 525 | 0 | 0 | 1623 | 925 |
| 3 | ARGES | 26277 | 1329 | 5934 | 291 | 1550 | 1882 | 28 | 315 | 2992 | 11956 |
| | din care femei | 11385 | 576 | 2615 | 135 | 701 | 974 | 0 | 194 | 1153 | 5037 |
| 4 | BACAU | 29953 | 859 | 4410 | 494 | 8430 | 2083 | 63 | 0 | 5571 | 8043 |
| | din care femei | 13140 | 356 | 1432 | 245 | 2101 | 1121 | 0 | 0 | 2958 | 4927 |
| 5 | BIHOR | 21409 | 807 | 2467 | 599 | 12372 | 851 | 5 | 0 | 4308 | 0 |
| | din care femei | 8171 | 215 | 1086 | 274 | 4200 | 480 | 0 | 0 | 1916 | 0 |
| 6 | BISTRITA NASA | 16128 | 319 | 2357 | 262 | 2577 | 614 | 11 | 0 | 605 | 9383 |
| | din care femei | 7155 | 64 | 1083 | 123 | 1133 | 335 | 0 | 0 | 272 | 4145 |
| 7 | BOTOSANI | 21614 | 103 | 2031 | 1186 | 283 | 344 | 12 | 3 | 17652 | 0 |
| | din care femei | 7850 | 29 | 779 | 531 | 105 | 204 | 0 | 2 | 6200 | 0 |
| 8 | BRASOV | 30907 | 5267 | 3064 | 1873 | 14723 | 601 | 4 | 0 | 996 | 4379 |
| | din care femei | 13293 | 2085 | 1657 | 918 | 5889 | 336 | 0 | 0 | 457 | 1951 |
| 9 | BRAILA | 12933 | 529 | 1604 | 682 | 2325 | 744 | 29 | 93 | 1043 | 5884 |
| | din care femei | 4583 | 174 | 605 | 256 | 689 | 362 | 0 | 42 | 425 | 2030 |
| 10 | BUCURESTI | 33872 | 1758 | 4591 | 407 | 4353 | 576 | 1 | 0 | 351 | 21835 |
| | din care femei | 18084 | 1087 | 2961 | 259 | 2128 | 303 | 0 | 0 | 178 | 11168 |
| 11 | BUZAU | 33218 | 0 | 2655 | 921 | 17688 | 1155 | 0 | 0 | 10799 | 0 |
| | din care femei | 12824 | 0 | 964 | 343 | 7280 | 571 | 0 | 0 | 3666 | 0 |
| 12 | CARAS SEVERIN | 25560 | 1556 | 3535 | 833 | 12576 | 0 | 13 | 0 | 7047 | 0 |
| | din care femei | 10889 | 331 | 1669 | 274 | 5769 | 0 | 0 | 0 | 2846 | 0 |
| 13 | CALARASI | 17485 | 234 | 1210 | 702 | 10636 | 377 | 0 | 0 | 4326 | 0 |
| | din care femei | 7308 | 24 | 328 | 261 | 4747 | 194 | 0 | 0 | 1754 | 0 |
| 14 | CLUJ | 29995 | 1256 | 13229 | 1235 | 6897 | 268 | 0 | 0 | 7110 | 0 |
| | din care femei | 15196 | 659 | 6793 | 646 | 3421 | 155 | 0 | 0 | 3522 | 0 |
| 15 | CONSTANTA | 17854 | 389 | 6946 | 1554 | 4709 | 588 | 30 | 0 | 3638 | 0 |
| | din care femei | 10209 | 288 | 4762 | 1175 | 2015 | 371 | 0 | 0 | 1598 | 0 |
| 16 | COVASNA | 12458 | 470 | 1748 | 565 | 4649 | 766 | 11 | 0 | 1729 | 2520 |
| | din care femei | 5072 | 81 | 736 | 313 | 1791 | 414 | 0 | 0 | 669 | 1068 |
| 17 | DAMBOVITA | 32962 | 289 | 1669 | 458 | 7780 | 1285 | 21 | 5 | 5619 | 15836 |
| | din care femei | 13822 | 94 | 766 | 204 | 3085 | 707 | 0 | 5 | 2347 | 6614 |
| 18 | DOLJ | 15479 | 98 | 4186 | 1315 | 4683 | 757 | 8 | 0 | 4432 | 0 |
| | din care femei | 7549 | 34 | 1873 | 614 | 1733 | 455 | 0 | 0 | 2840 | 0 |
| 19 | GALATI | 41435 | 742 | 2347 | 446 | 25928 | 913 | 3 | 0 | 4453 | 6603 |
| | din care femei | 16294 | 328 | 1227 | 249 | 9867 | 554 | 0 | 0 | 1771 | 2298 |
| 20 | GIURGIU | 13104 | 337 | 1727 | 392 | 4548 | 547 | 26 | 0 | 686 | 4841 |
| | din care femei | 5452 | 117 | 765 | 170 | 1930 | 304 | 0 | 0 | 299 | 1867 |
| 21 | GORJ | 26762 | 1303 | 2920 | 1351 | 11884 | 1740 | 136 | 44 | 6060 | 1324 |
| | din care femei | 12177 | 514 | 1391 | 651 | 5366 | 921 | 0 | 16 | 2753 | 565 |
| 22 | HARGHITA | 18707 | 443 | 3457 | 808 | 9237 | 996 | 0 | 0 | 3766 | 0 |
| | din care femei | 7896 | 129 | 1395 | 462 | 3585 | 577 | 0 | 0 | 1748 | 0 |
| 23 | HUNEDOARA | 43074 | 1347 | 4743 | 1285 | 8180 | 1260 | 20 | 0 | 950 | 25289 |
| | din care femei | 21228 | 694 | 2524 | 592 | 3958 | 668 | 0 | 0 | 458 | 12334 |
| 24 | IALOMITA | 16219 | 523 | 2072 | 800 | 7425 | 874 | 97 | 0 | 1094 | 3334 |
| | din care femei | 6608 | 217 | 728 | 335 | 2869 | 445 | 0 | 0 | 469 | 1545 |
| 25 | IASI | 55393 | 486 | 2595 | 579 | 40691 | 2061 | 15 | 0 | 8966 | 0 |
| | din care femei | 18809 | 216 | 1277 | 301 | 13132 | 1075 | 0 | 0 | 2808 | 0 |
| 26 | ILFOV | 2898 | 161 | 750 | 67 | 1436 | 83 | 0 | 0 | 401 | 0 |
| | din care femei | 1591 | 111 | 400 | 53 | 745 | 45 | 0 | 0 | 237 | 0 |
| 27 | MARAMURES | 22595 | 4216 | 1887 | 656 | 8770 | 1214 | 13 | 1 | 828 | 5010 |
| | din care femei | 8460 | 858 | 951 | 166 | 3016 | 670 | 0 | 2 | 693 | 2104 |
| 28 | MEHEDINTI | 20910 | 327 | 2177 | 510 | 9152 | 578 | 7 | 0 | 8159 | 0 |
| | din care femei | 8267 | 106 | 1038 | 290 | 3524 | 306 | 0 | 0 | 3003 | 0 |
| 29 | MURES | 38468 | 313 | 3768 | 857 | 12183 | 1352 | 37 | 0 | 4802 | 15156 |
| | din care femei | 16089 | 111 | 1993 | 464 | 4674 | 693 | 0 | 0 | 2068 | 6086 |
| 30 | NEAMT | 41547 | 29 | 2420 | 654 | 6509 | 1850 | 28 | 0 | 10317 | 19740 |
| | din care femei | 16358 | 15 | 1046 | 272 | 2526 | 1005 | 0 | 0 | 4170 | 7324 |
| 31 | OLT | 32007 | 702 | 1824 | 1657 | 2925 | 1611 | 50 | 0 | 2840 | 20398 |
| | din care femei | 12465 | 289 | 682 | 628 | 1049 | 821 | 0 | 0 | 1419 | 7577 |
| 32 | PRAHOVA | 42330 | 428 | 5725 | 1284 | 20625 | 1334 | 35 | 13 | 3081 | 9805 |
| | din care femei | 18382 | 141 | 2818 | 621 | 8598 | 785 | 0 | 8 | 1310 | 4101 |
| 33 | SATU-MARE | 18666 | 639 | 1506 | 353 | 5623 | 711 | 0 | 0 | 2896 | 6938 |
| | din care femei | 7420 | 112 | 500 | 155 | 2107 | 390 | 0 | 0 | 1144 | 3012 |
| 34 | SALAJ | 14001 | 339 | 1599 | 655 | 8568 | 823 | 28 | 203 | 632 | 1154 |
| | din care femei | 5950 | 219 | 901 | 370 | 3107 | 405 | 0 | 120 | 275 | 553 |
| 35 | SIBIU | 26346 | 90 | 3194 | 1398 | 15280 | 686 | 38 | 0 | 2859 | 2801 |
| | din care femei | 10752 | 70 | 1578 | 622 | 5704 | 401 | 0 | 0 | 1126 | 1251 |
| 36 | SUCEAVA | 26720 | 0 | 6094 | 601 | 11449 | 1359 | 44 | 0 | 2861 | 4312 |
| | din care femei | 10724 | 0 | 2790 | 318 | 3723 | 772 | 0 | 0 | 1142 | 1979 |
| 37 | TELEORMAN | 37776 | 365 | 2296 | 225 | 30063 | 949 | 0 | 0 | 3878 | 0 |
| | din care femei | 15531 | 93 | 876 | 96 | 12633 | 435 | 0 | 0 | 1398 | 0 |
| 38 | TIMIS | 35088 | 629 | 12257 | 349 | 3427 | 420 | 2 | 0 | 3117 | 14887 |
| | din care femei | 16261 | 370 | 5427 | 169 | 1679 | 276 | 0 | 0 | 1523 | 6817 |
| 39 | TULCEA | 12060 | 285 | 1825 | 471 | 3117 | 324 | 24 | 0 | 3314 | 2700 |
| | din care femei | 5178 | 225 | 728 | 207 | 1299 | 162 | 0 | 0 | 1464 | 1093 |
| 40 | VASLUI | 29515 | 0 | 4154 | 551 | 16878 | 977 | 0 | 0 | 6955 | 0 |
| | din care femei | 9474 | 0 | 1653 | 225 | 5002 | 466 | 0 | 0 | 2128 | 0 |
| 41 | VALCEA | 16642 | 167 | 3026 | 829 | 5108 | 1450 | 66 | 0 | 1169 | 4827 |
| | din care femei | 7857 | 52 | 1466 | 389 | 2380 | 811 | 0 | 0 | 516 | 2243 |
| 42 | VRANCEA | 11084 | 31 | 1371 | 503 | 2533 | 572 | 24 | 0 | 2152 | 3898 |
| | din care femei | 4400 | 6 | 603 | 185 | 977 | 319 | 0 | 0 | 841 | 1469 |
| | TOTAL | 1060578 | 31051 | 145375 | 32621 | 404961 | 39190 | 929 | 677 | 170449 | 235325 |
| | din care femei | 447666 | 11848 | 68865 | 15484 | 157416 | 21206 | 0 | 389 | 70206 | 102252 |

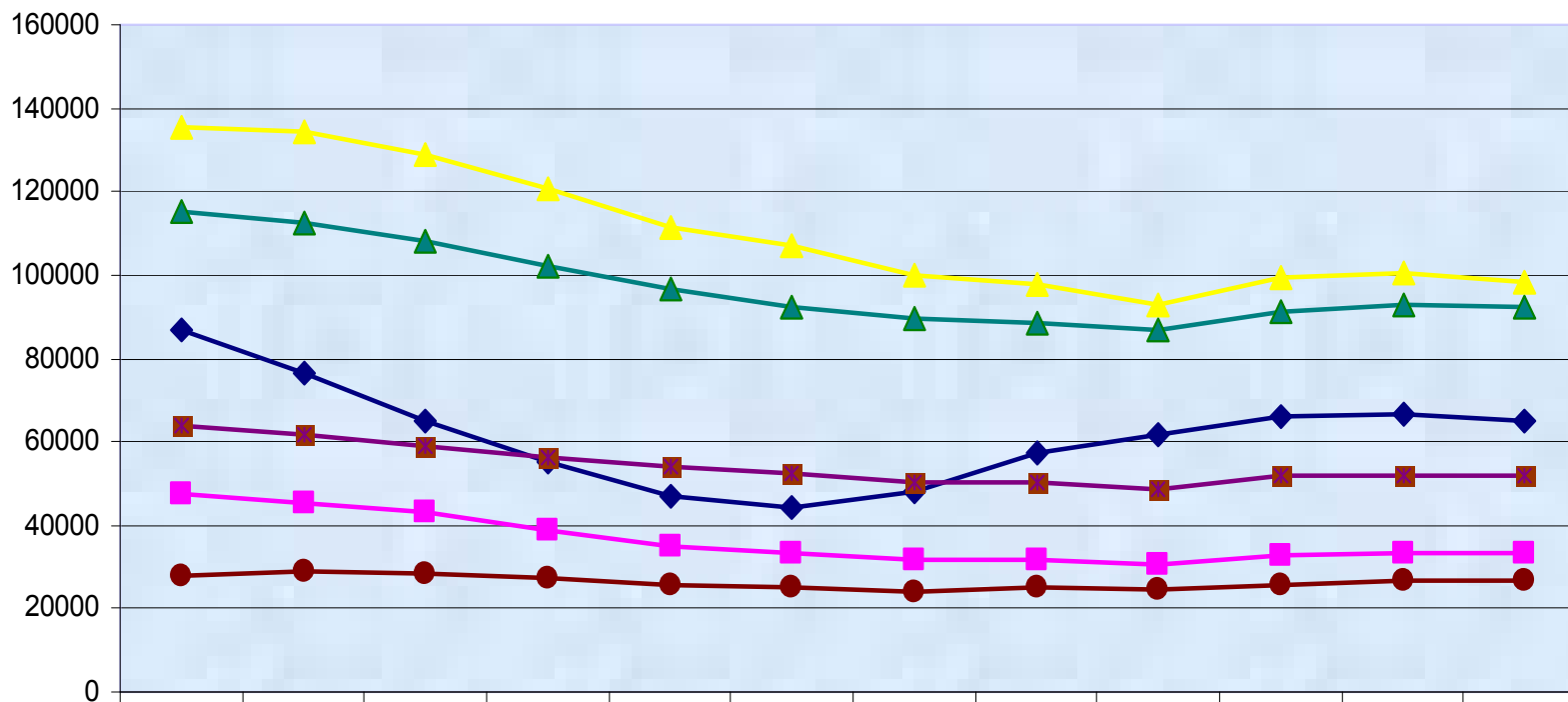
Iesirile de someri din evidentele agentilor pentru ocuparea fortei de munca -structurate pe motive-cumulat 12 luni 2007

| Nr.crt. | Judet | Total | Incaadr. in munca pe perioada nedeterminata | Incaadr. in munca pe perioada determinata | Refuz nejustificat de incaadr. sau de a urma un curs prof | Ne reprezentari la viza | Nereinnoire cerere loc munca la expirarea per. de indemnizare | Plecarea in strainatate | Incorporare in armata | Pensionare | Deces | Intrare in detentie | Intrare in concediu de maternitate | Nereinnoire cerere de loc de munca someri neindemniz. | Alte situatii |
|---------|----------------|-------|---|---|---|-------------------------|---|-------------------------|-----------------------|------------|-------|---------------------|------------------------------------|---|---------------|
| 0 | 1 | 2 | 3 | 4 | 5 | 6 | 7 | 8 | 8 | 9 | 10 | 11 | 12 | 13 | 15 |
| 1 | ALBA | 22814 | 3716 | 2989 | 6 | 150 | 4869 | 107 | 0 | 158 | 14 | 1 | 476 | 10328 | 0 |
| | din care femei | 10104 | 1591 | 1106 | 4 | 57 | 2601 | 51 | 0 | 83 | 2 | 0 | 306 | 4303 | 0 |
| 2 | ARAD | 20922 | 5844 | 2014 | 54 | 103 | 1345 | 83 | 0 | 90 | 11 | 0 | 139 | 11218 | 21 |
| | din care femei | 8832 | 2345 | 950 | 16 | 46 | 702 | 48 | 0 | 37 | 3 | 0 | 93 | 4581 | 11 |
| 3 | ARGES | 29347 | 13065 | 3921 | 44 | 222 | 5450 | 72 | 0 | 245 | 21 | 0 | 123 | 6161 | 23 |
| | din care femei | 12214 | 5677 | 1439 | 16 | 74 | 2624 | 39 | 0 | 103 | 1 | 0 | 85 | 2148 | 8 |
| 4 | BACAU | 33357 | 9195 | 1368 | 81 | 257 | 5888 | 46 | 0 | 231 | 16 | 0 | 258 | 15782 | 235 |
| | din care femei | 14042 | 3571 | 298 | 43 | 94 | 3070 | 11 | 0 | 98 | 4 | 0 | 148 | 6537 | 168 |
| 5 | BIHOR | 22350 | 5059 | 701 | 8 | 512 | 2063 | 25 | 0 | 99 | 3 | 0 | 134 | 13650 | 96 |
| | din care femei | 8503 | 1993 | 154 | 2 | 192 | 1077 | 8 | 0 | 36 | 1 | 0 | 83 | 4921 | 36 |
| 6 | BISTRITA-NS | 17076 | 9378 | 2452 | 64 | 58 | 1120 | 58 | 0 | 46 | 2 | 0 | 51 | 3847 | 0 |
| | din care femei | 7476 | 3894 | 1192 | 34 | 23 | 571 | 21 | 0 | 19 | 0 | 0 | 36 | 1686 | 0 |
| 7 | BOTOSANI | 23891 | 7710 | 2856 | 146 | 453 | 2353 | 70 | 0 | 56 | 4 | 0 | 20 | 10150 | 73 |
| | din care femei | 8330 | 2880 | 801 | 59 | 193 | 875 | 35 | 0 | 21 | 1 | 0 | 20 | 3403 | 42 |
| 8 | BRASOV | 33401 | 4576 | 2870 | 179 | 1146 | 2770 | 342 | 0 | 435 | 25 | 1 | 502 | 20509 | 46 |
| | din care femei | 14282 | 1988 | 1043 | 85 | 537 | 1500 | 206 | 0 | 263 | 4 | 0 | 286 | 8348 | 22 |
| 9 | BRAILA | 14943 | 4538 | 1745 | 90 | 531 | 1066 | 49 | 0 | 47 | 2 | 0 | 22 | 6600 | 253 |
| | din care femei | 5144 | 1623 | 439 | 48 | 188 | 442 | 24 | 0 | 24 | 0 | 0 | 22 | 2201 | 133 |
| 10 | BUCURESTI | 38347 | 18768 | 3747 | 200 | 265 | 1523 | 52 | 0 | 454 | 15 | 0 | 109 | 13214 | 0 |
| | din care femei | 19703 | 9814 | 1849 | 118 | 100 | 755 | 28 | 0 | 261 | 2 | 0 | 100 | 6676 | 0 |
| 11 | BUZAU | 37237 | 14852 | 10082 | 66 | 254 | 2980 | 20 | 0 | 47 | 8 | 0 | 0 | 8928 | 0 |
| | din care femei | 14230 | 6288 | 2980 | 6 | 91 | 1446 | 8 | 0 | 21 | 2 | 0 | 0 | 3388 | 0 |
| 12 | CARAS SEVERIN | 24610 | 5098 | 5386 | 8 | 206 | 0 | 223 | 0 | 73 | 16 | 0 | 71 | 13529 | 0 |
| | din care femei | 10419 | 2077 | 2085 | 4 | 90 | 0 | 131 | 0 | 20 | 2 | 0 | 48 | 5962 | 0 |
| 13 | CALARASI | 20037 | 2397 | 2113 | 28 | 157 | 13 | 41 | 0 | 36 | 2 | 0 | 46 | 15196 | 8 |
| | din care femei | 8077 | 796 | 621 | 8 | 56 | 1 | 19 | 0 | 4 | 1 | 0 | 29 | 6537 | 5 |
| 14 | CLUJ | 30992 | 8427 | 7263 | 83 | 390 | 2948 | 212 | 1 | 399 | 7 | 0 | 506 | 10756 | 0 |
| | din care femei | 15398 | 4190 | 3748 | 31 | 175 | 1441 | 123 | 0 | 180 | 2 | 0 | 331 | 5177 | 0 |
| 15 | CONSTANTA | 20283 | 5040 | 3763 | 19 | 744 | 2399 | 71 | 0 | 114 | 10 | 0 | 163 | 7960 | 0 |
| | din care femei | 10931 | 3149 | 1995 | 6 | 428 | 1521 | 51 | 0 | 74 | 4 | 0 | 128 | 3575 | 0 |
| 16 | COVASNA | 12366 | 2494 | 1199 | 11 | 126 | 1337 | 42 | 0 | 56 | 2 | 0 | 22 | 7072 | 5 |
| | din care femei | 5097 | 1073 | 468 | 3 | 54 | 650 | 21 | 0 | 30 | 1 | 0 | 12 | 2784 | 1 |
| 17 | DAMBOVITA | 34498 | 13371 | 2223 | 5 | 411 | 1252 | 178 | 2 | 103 | 7 | 0 | 106 | 16837 | 3 |
| | din care femei | 13844 | 5356 | 750 | 2 | 165 | 573 | 77 | 0 | 28 | 1 | 0 | 71 | 6818 | 3 |
| 18 | DOLJ | 20730 | 15186 | 3692 | 3 | 1260 | 0 | 100 | 1 | 200 | 17 | 0 | 0 | 0 | 271 |
| | din care femei | 8822 | 6428 | 1746 | 0 | 346 | 0 | 52 | 0 | 79 | 3 | 0 | 0 | 0 | 168 |
| 19 | GALATI | 44557 | 5013 | 2145 | 49 | 309 | 2241 | 45 | 0 | 75 | 4 | 1 | 118 | 34527 | 30 |
| | din care femei | 17236 | 1981 | 520 | 32 | 157 | 1183 | 32 | 0 | 48 | 0 | 0 | 79 | 13192 | 12 |
| 20 | GIURGIU | 14047 | 5366 | 1153 | 6 | 270 | 1452 | 15 | 0 | 65 | 0 | 0 | 28 | 5616 | 76 |
| | din care femei | 5568 | 1991 | 452 | 1 | 106 | 593 | 6 | 0 | 27 | 0 | 0 | 15 | 2330 | 47 |
| 21 | GORJ | 31791 | 6541 | 2919 | 11 | 598 | 1068 | 105 | 0 | 304 | 11 | 0 | 381 | 19843 | 10 |
| | din care femei | 13642 | 2608 | 1083 | 6 | 271 | 364 | 50 | 0 | 131 | 2 | 0 | 250 | 8871 | 6 |
| 22 | HARGHITA | 21613 | 4363 | 1090 | 646 | 324 | 2068 | 92 | 0 | 144 | 5 | 1 | 352 | 12528 | 0 |
| | din care femei | 8574 | 1648 | 404 | 155 | 126 | 902 | 52 | 0 | 61 | 4 | 0 | 244 | 4978 | 0 |
| 23 | HUNEDOARA | 46683 | 19445 | 8182 | 26 | 539 | 880 | 371 | 0 | 287 | 12 | 1 | 212 | 16728 | 0 |
| | din care femei | 22120 | 9220 | 3479 | 12 | 231 | 285 | 205 | 0 | 100 | 1 | 0 | 148 | 8439 | 0 |
| 24 | IALOMITA | 18279 | 3649 | 2693 | 27 | 0 | 134 | 152 | 0 | 64 | 2 | 0 | 43 | 11506 | 9 |
| | din care femei | 7035 | 1153 | 987 | 8 | 0 | 47 | 50 | 0 | 20 | 0 | 0 | 25 | 4740 | 5 |
| 25 | IASI | 57929 | 12350 | 3725 | 29 | 686 | 3247 | 73 | 0 | 150 | 11 | 0 | 192 | 37466 | 0 |
| | din care femei | 18856 | 4066 | 885 | 18 | 335 | 1508 | 45 | 0 | 68 | 3 | 0 | 125 | 11803 | 0 |
| 26 | ILFOV | 3406 | 909 | 119 | 35 | 16 | 1025 | 9 | 0 | 52 | 8 | 0 | 0 | 1233 | 0 |
| | din care femei | 1748 | 442 | 68 | 18 | 11 | 500 | 5 | 0 | 30 | 1 | 0 | 0 | 673 | 0 |
| 27 | MARAMURES | 23680 | 4212 | 2848 | 1 | 445 | 3344 | 47 | 0 | 147 | 9 | 0 | 45 | 12562 | 20 |
| | din care femei | 8779 | 1748 | 947 | 0 | 158 | 1090 | 12 | 0 | 41 | 2 | 0 | 18 | 4752 | 11 |
| 28 | MEHEDINTI | 22208 | 4267 | 3338 | 72 | 200 | 1808 | 95 | 0 | 99 | 1 | 0 | 16 | 12099 | 213 |
| | din care femei | 8484 | 1826 | 761 | 35 | 80 | 753 | 43 | 0 | 34 | 0 | 0 | 14 | 4799 | 139 |
| 29 | MURES | 40859 | 15068 | 3018 | 15 | 0 | 3120 | 171 | 0 | 142 | 4 | 0 | 181 | 18724 | 416 |
| | din care femei | 17012 | 5897 | 1144 | 9 | 0 | 1504 | 83 | 0 | 57 | 0 | 0 | 136 | 7970 | 212 |
| 30 | NEAMT | 43833 | 25797 | 3919 | 25 | 454 | 1849 | 81 | 0 | 70 | 7 | 0 | 143 | 11465 | 23 |
| | din care femei | 16969 | 9164 | 1487 | 14 | 178 | 1022 | 42 | 0 | 33 | 3 | 0 | 95 | 4919 | 12 |
| 31 | OLT | 35096 | 16457 | 3211 | 27 | 215 | 4041 | 39 | 0 | 171 | 7 | 0 | 60 | 10858 | 10 |
| | din care femei | 13268 | 6264 | 954 | 12 | 78 | 1596 | 15 | 0 | 63 | 1 | 0 | 27 | 4251 | 7 |
| 32 | PRAHOVA | 46144 | 15694 | 5385 | 55 | 742 | 5821 | 185 | 0 | 427 | 19 | 0 | 487 | 17308 | 21 |
| | din care femei | 19407 | 6016 | 1824 | 12 | 253 | 3315 | 107 | 0 | 191 | 6 | 0 | 280 | 7389 | 14 |
| 33 | SATU-MARE | 19829 | 5769 | 1796 | 21 | 176 | 1392 | 19 | 0 | 61 | 5 | 0 | 23 | 10313 | 54 |
| | din care femei | 7877 | 2290 | 658 | 8 | 57 | 840 | 6 | 0 | 18 | 0 | 0 | 16 | 3964 | 20 |
| 34 | SALAJ | 15900 | 1948 | 597 | 8 | 110 | 1711 | 121 | 0 | 73 | 6 | 0 | 309 | 11017 | 0 |
| | din care femei | 6273 | 872 | 243 | 3 | 47 | 804 | 72 | 0 | 28 | 0 | 0 | 199 | 4005 | 0 |
| 35 | SIBIU | 29708 | 12750 | 3312 | 1 | 370 | 2535 | 135 | 0 | 157 | 4 | 0 | 161 | 10257 | 26 |
| | din care femei | 11838 | 5416 | 1040 | 0 | 169 | 1314 | 76 | 0 | 62 | 1 | 0 | 92 | 3654 | 14 |
| 36 | SUCEAVA | 29079 | 8612 | 2606 | 35 | 192 | 3649 | 96 | 0 | 118 | 6 | 0 | 234 | 12435 | 1096 |
| | din care femei | 11536 | 3234 | 953 | 18 | 86 | 1947 | 46 | 0 | 56 | 0 | 0 | 152 | 4544 | 500 |
| 37 | TELEORMAN | 39493 | 9905 | 6475 | 7 | 163 | 3029 | 96 | 0 | 111 | 5 | 0 | 25 | 19677 | 0 |
| | din care femei | 15665 | 3513 | 2449 | 5 | 54 | 920 | 26 | 0 | 42 | 1 | 0 | 15 | 8640 | 0 |
| 38 | TIMIS | 36338 | 22587 | 5496 | 52 | 2 | 2129 | 54 | 0 | 100 | 4 | 0 | 45 | 5842 | 27 |
| | din care femei | 16587 | 10128 | 2446 | 20 | 0 | 1111 | 22 | 0 | 54 | 2 | 0 | 35 | 2754 | 15 |
| 39 | TULCEA | 12939 | 2209 | 778 | 64 | 400 | 1314 | 33 | 0 | 41 | 5 | 0 | 76 | 8004 | 15 |
| | din care femei | 5303 | 821 | 249 | 19 | 165 | 558 | 19 | 0 | 18 | 0 | 0 | 47 | 3395 | 12 |
| 40 | VASLUI | 32214 | 1435 | 9038 | 135 | 686 | 4628 | 59 | 0 | 60 | 5 | 0 | 0 | 16168 | 0 |
| | din care femei | 10336 | 472 | 2655 | 126 | 322 | 2230 | 26 | 0 | 23 | 2 | 0 | 0 | 4480 | 0 |
| 41 | VALCEA | 18953 | 2948 | 3135 | 2 | 573 | 43 | 94 | 0 | 70 | 4 | 0 | 332 | 11715 | 37 |
| | din care femei | 8677 | 1178 | 1344 | 0 | 314 | 17 | 48 | 0 | 26 | 1 | 0 | 205 | 5527 | 17 |
| 42 | VRANCEA | 11456 | 2131 | 1539 | 3 | 156 | 1056 | 14 | 0 | 55 | 1 | 0 | 24 | 6470 | 7 |
| | din care femei | 4251 | 817 | 492 | 2 | 63 | 449 | 5 | 0 | 22 | | | | | |

Evolutia numarului de someri de lunga durata la sfirsitul fiecarui trimestru al anului 2007



Evoluția numărului de șomeri înregistrați, structurați pe grupe de vârstă, în anul 2007



| | ian | feb | martie | aprilie | mai | iunie | iulie | august | sept | oct | nov | dec |
|----------------|--------|--------|--------|---------|--------|--------|-------|--------|-------|-------|--------|-------|
| ◆ Sub 25 ani | 86712 | 76337 | 64886 | 55004 | 47225 | 44420 | 47982 | 57332 | 61632 | 66186 | 66452 | 65217 |
| ■ 25-29 ani | 47467 | 45373 | 43252 | 39024 | 35034 | 33550 | 31761 | 31622 | 30316 | 32525 | 33379 | 33105 |
| ▲ 30-39 ani | 135687 | 134456 | 128887 | 120451 | 111132 | 106870 | 99812 | 97722 | 93029 | 99292 | 100594 | 98432 |
| ▲ 40-49 ani | 115431 | 112512 | 108267 | 102195 | 96710 | 92481 | 89424 | 88235 | 86733 | 91427 | 92867 | 92548 |
| ■ 50-55 ani | 63937 | 61554 | 59245 | 56287 | 54077 | 52518 | 50282 | 50452 | 48760 | 52094 | 52148 | 51658 |
| ● peste 55 ani | 28075 | 28781 | 28486 | 27378 | 25654 | 24875 | 23902 | 25057 | 24542 | 25851 | 26529 | 26878 |